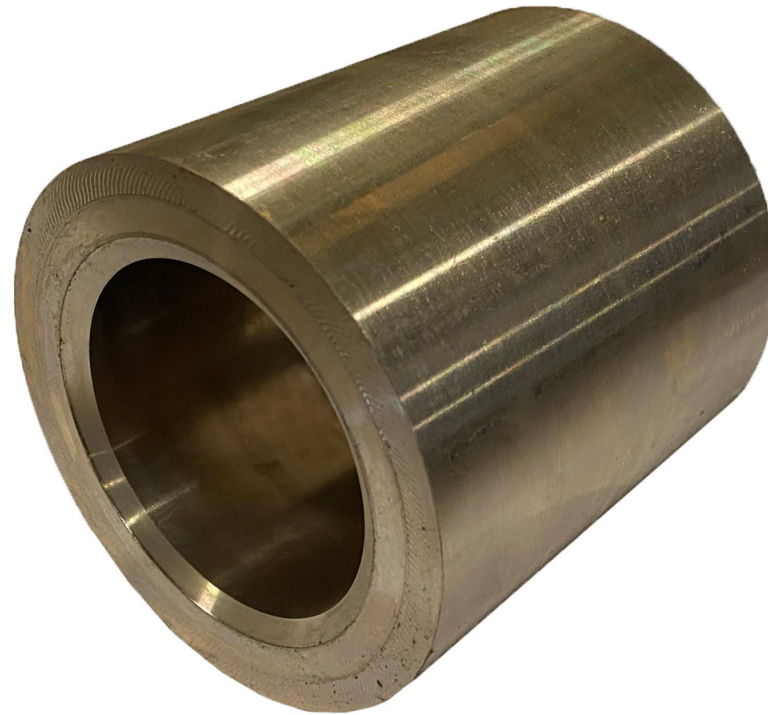


NICKEL ALUMINUM BRONZE (C95500)

TYPICAL USES

C95500 9D Nickel Aluminum Bronze is known for its excellent corrosion resistance in sea water. C955 can be used in heavy duty applications that may see wear, fatigue, and abrasion.



CONTACT US

360 Sheldon Drive
Cambridge, ON N1T 1A9
519-622-7900
barstock@bearingbronze.com

[GET A QUOTE](#)

NICKEL ALUMINUM BRONZE (C95500)

TYPICAL USES

Product Category	Product	Reason
Builders Hardware	Window Hardware	Appearance, Corrosion Resistance (Excellent), Excellent Machinability, High Strength
Consumer	Musical Instruments	Appearance, Corrosion Resistance (Excellent), Resonant Frequency, Damping Capacity, Wear Resistance, Excellent Machinability, High Strength
	Piano Keys	Appearance, Corrosion Resistance (Excellent), Wear Resistance, Excellent Machinability, High Strength
Electrical	Electrical Hardware	Electrical Conductivity, Thermal Conductivity, Corrosion Resistance (Excellent), High Strength
Fasteners	Stuffing Box Nuts	Corrosion Resistance (Excellent), Wear Resistance, High Strength
Industrial	Air Craft Components	Corrosion Resistance (Excellent), Wear Resistance, High Strength, Retains Strength at Elevated Temperatures, Toughness
	Bearings	Corrosion Resistance (Excellent), Wear Resistance, High Strength
	Bushings	Corrosion Resistance (Excellent), Wear Resistance, High Strength
	Gears	Corrosion Resistance (Excellent), Wear Resistance, High Strength
	Glands	Corrosion Resistance (Excellent), Wear Resistance, High Strength
	Glass Molds	Corrosion Resistance (Excellent), Wear Resistance, High Strength, Retains Strength at Elevated Temperatures
	Hand Gun Recoil Mechanisms	Corrosion Resistance (Excellent), High Strength, Toughness
	Hot Mill Guides	Corrosion Resistance (Excellent), High Strength, Retains Strength at Elevated Temperatures, Toughness
	Landing Gear Parts	Corrosion Resistance, Corrosion Resistance (Excellent), Wear Resistance, Fatigue Properties, Fatigue Strength, High Strength, Retains Strength at Elevated Temperatures
	Machine Parts	Thermal Conductivity, Corrosion Resistance (Excellent), Wear Resistance, Excellent Machinability, High Strength
	Pickling Equipment	Corrosion Resistance (Excellent), Corrosion Resistance to Acids, High Strength
	Piston Guides	Corrosion Resistance (Excellent), Wear Resistance, High Strength
	Pump Fluid Ends	Corrosion Resistance (Excellent), High Strength
	Sewage Treatment Applications	Corrosion Resistance (Excellent), Wear Resistance, High Strength
	Valve Bodies	Corrosion Resistance (Excellent), Excellent Machinability, High Strength
	Valve Components	Corrosion Resistance (Excellent), Wear Resistance, High Strength
	Valve Guides	Corrosion Resistance (Excellent), Wear Resistance, High Strength
	Valve Seats	Corrosion Resistance (Excellent), Wear Resistance, High Strength
	Wear Plates	Corrosion Resistance (Excellent), Wear Resistance, Toughness
	Welding Jaws	Thermal Conductivity, Corrosion Resistance (Excellent), High Strength, Retains Strength at Elevated Temperatures, Toughness
	Worms	Corrosion Resistance (Excellent), Wear Resistance, Machinability - Good, High Strength
Worms Wheels	Corrosion Resistance (Excellent), Wear Resistance, Toughness	
Marine	Covers for Marine Hardware	Appearance, Corrosion Resistance (Excellent), High Strength
	Marine Applications	Corrosion Resistance (Excellent), Wear Resistance, High Strength
	Marine Hardware	Appearance, Corrosion Resistance (Excellent), High Strength
	Ship Building	Corrosion Resistance (Excellent), Wear Resistance, Machinability - Good, High Strength
Ordnance	Government Fittings	Corrosion Resistance (Excellent), High Strength, Toughness

CONTACT US

360 Sheldon Drive
 Cambridge, ON N1T 1A9
 519-622-7900
barstock@bearingbronze.com

GET A QUOTE

NICKEL ALUMINUM BRONZE (C95500)

MECHANICAL PROPERTIES

Form	Temper Code	Tensile Strength (ksi)	YS-0.5% Ext (ksi)	Elongation (%)	Rockwell B scale	Brinell Hardness, 3000 kg load	Shear Strength (ksi)	Izod (ft-lbs)	Charpy V-Notch Impact Strength (ft-lbs)	Compressive Strength .1 in. set/in. (ksi)	Creep Strength (0.1% per 10,000 hours) (ksi)	Fatigue Strength** (ksi)	Proportional Limit (ksi)
As Centrifugal Cast	M02	90 Min for Standard 90 Min for Standard	40 Min for Standard 40 Min for Standard	6 Min for Standard 6 Min for Standard		190 Min for Standard							
	TQ50	110 Min for Standard 110 Min for Standard	60 Min for Standard 60 Min for Standard	5 Min for Standard 5 Min for Standard		200 Min for Standard							
As Continuous Cast	M07	95 Min for Standard 95 Min for Standard	42 Min for Standard 42 Min for Standard	10 Min for Standard 10 Min for Standard									
	TQ50	110 Min for Standard 110 Min for Standard	62 Min for Standard 62 Min for Standard	8 Min for Standard 8 Min for Standard									
As Permanent Mold Cast	M05	110 Min for Standard	60 Min for Standard	5 Min for Standard									
As Sand Cast	M01	90 Min for Standard 90 Min for Standard 100 Typ	40 Min for Standard 40 Min for Standard 44 Typ	6 Min for Standard 6 Min for Standard 12 Typ	87 Typ	190 Min for Standard Standard 195 Typ	48 Typ	13 Typ	10 Typ	120 Typ	11 Typ 3 Typ 6 Typ	31 Typ	28 Typ
	TQ50	110 Min for Standard 110 Min for Standard 120 Typ	60 Min for Standard 60 Min for Standard 68 Typ	5 Min for Standard 5 Min for Standard 10 Typ		200 Min for Standard Standard 230 Typ	70 Typ	15 Typ		150 Typ		38 Typ	45 Typ

* Measured at room temperature, 68°F (20°C).
 ** Fatigue Strength: 100 x 10⁶ cycles, unless indicated as [N] x 10⁶.

CHEMICAL PROPERTIES

	Element				
	Cu(1)	Fe	Ni(2)	Al	Mn
Min (%)	78	3	3	10	
Max (%)		5	5.5	11.5	3.5

(1) Cu + Sum of Named Elements 99.5% min.
 (2) Ni value includes Co.

FABRICATION PROPERTIES

Machining Technique	Suitability
Soldering	Good
Brazing	Fair
Oxyacetylene Welding	Not Recommended
Gas Shielded Arc Welding	Good
Coated Metal Arc Welding	Good
Machinability Rating	50

CONTACT US

360 Sheldon Drive
 Cambridge, ON N1T 1A9
 519-622-7900
 barstock@bearingbronze.com

GET A QUOTE